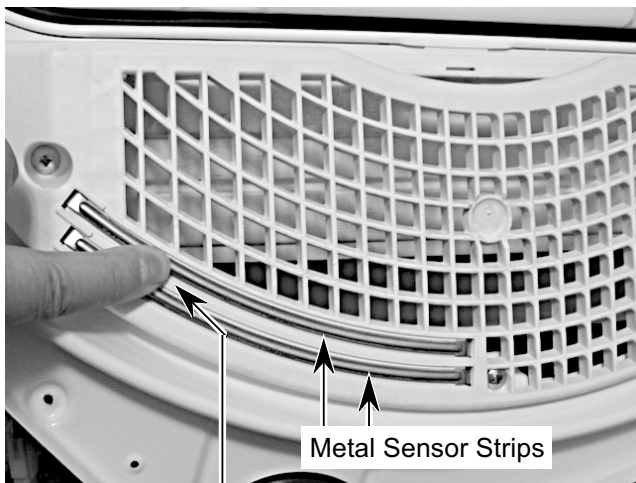


MOISTURE SENSOR

Refer to page 4-15 for the procedure for servicing the moisture sensor.

Perform this test if the dryer shuts off too soon when set to an automatic cycle.

1. Set the dryer to the "Diagnostic Test Mode" (refer to the procedure on page 6-1).
2. Open the dryer door.
3. Place a finger across the two metal sensor strips on the lint screen housing. If a beep tone sounds and "03" is displayed in the console window, the sensor is working normally.



Bridge Strips
With Finger

4. If the moisture sensor fails the diagnostic test, check the moisture sensor wiring. Disconnect the power to the dryer, use an ohmmeter, and check the yellow-red and black wires for shorts (continuity to ground), first with no load (wire connector disconnected), and then with a load (connected).
5. If the diagnostic test passes, perform the thermistor test (refer to page 5-5).
6. If the problem still exists after replacing the thermistor, check the ribbon connections from the control panel to the machine control electronics board.
7. If all of the above are satisfactory, replace the machine control electronics board.

CONSOLE PUSHBUTTONS & LEDS

Refer to page 4-4 for the procedure for servicing the console.

Refer to the Diagnostic Tests on page 6-1, and activate the "Diagnostic Test Mode." Check for the following situations:

- None of the LEDs light.
- A particular group of LEDs does not light.
- One LED does not light.
- No beep sounds.
- No dryer function is activated when a particular pushbutton is pressed.
- An "E3" error code is displayed.



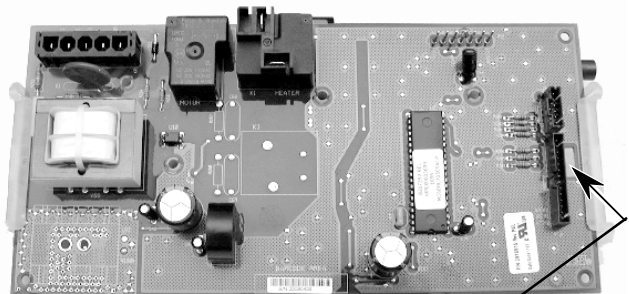
Console Pushbuttons & LEDs

Refer to the following test that corresponds to your problem.

NONE OF THE LEDS LIGHT

1. Check to make sure that ribbon connectors P3 and P4 are inserted all the way into the machine control electronics board.

Machine Control Electronics Board



Viewed From This Side

